

100學年度第2學期導師座談會  
Supervisors' Meeting  
in Spring Semester 2012  
教務處報告(黃奇教務長)  
Report on Academic Affairs  
Presenter: Dean of Academic Affairs  
Professor Chyi Hwang

## 報告事項(1) Items of report(1)

- 學科成績分析  
Analysis of grades
- 學科平均分數分布圖  
Distribution of average grades in subjects
- 近四年退學人數統計  
Statistics of expelled students in past four years
- 休、退學原因概況表  
Reasons of expulsion and suspension of study
- 各項招生考試時程  
Schedule of admission exams
- 教師登錄期中預警及成績之概況  
Rate of on-line submission of grades and pre-warning

## 報告事項(2) Items of report(2)

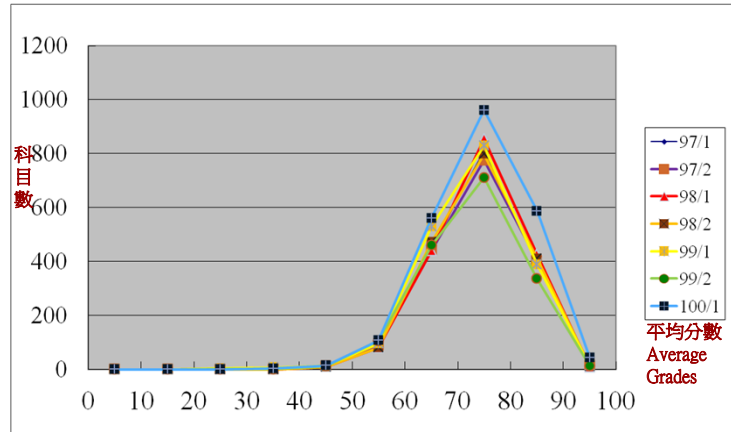
- 教學評量結果不佳之概況  
Statistics of teachers with poor teaching evaluation
- 新生問卷調查各學系之填答率統計(學士班)  
The statistics on the response rate of freshmen surveys for respective undergraduate programs
- 請協助配合事項  
Items requiring support
- 提醒事項  
Reminders
- 相關獎勵措施  
Measures of awards
- 教育部計畫徵件  
Call for proposal-MOE

## 學科成績分析 (Analysis of grades)

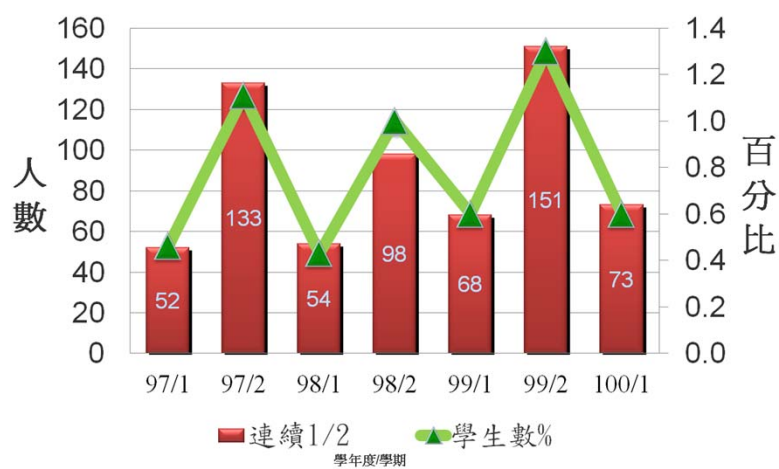
100學年度第1學期 Fall Semester in 2011

順序 order	最高 Highest passing rates				最低 Lowest passing rates			
	系所 Dept.	課程數 No. of courses	全及格 科目 Courses with 100% passing rate	課程通 過率 Rate of passing	系所 Dept.	課程數 No. of courses	全及格 科目 Courses with 100% passing rate	課程通 過率 Rate of passing
1	後中醫系	28	24	85.71%	工管系	40	1	2.50%
2	數媒系	7	4	57.14%	國財系	17	1	5.88%
3	娛管系	7	4	57.14%	資工系	72	6	8.33%
4	營養系	41	19	46.34%	電機系	74	7	9.46%
5	廚藝系	9	4	44.44%	觀旅系	21	2	9.52%

### 97~100學科平均分數分布圖 Distribution of Average Grades between 97 and 100 Academic Years



### 近四年退學人數統計 Statistics of expulsion in past four years



### 97-100學年度休(退)學原因概況表 Reasons of expulsion and suspension between 97 and 100 academic years

學年度 學年 數	退學人數 No. of expelled students						休學人數 No. of suspended students					
	學業成績 Grades		志趣不合 Interest		其他 Others		重病 Illness		經濟因素 Economic factors		其他 (服役、照顧家庭...) Others	
97	195 人	38%	242 人	48%	70 人	14%	26 人	24%	7 人	7%	74 人	69%
98	188 人	36%	242 人	46%	94 人	18%	32 人	23%	9 人	7%	96 人	70%
99	239 人	34%	330 人	47%	130 人	19%	43 人	23%	7 人	4%	138 人	73%
100(1)	73 人	20%	201 人	56%	84 人	23%	27 人	20%	10 人	7%	101 人	73%

page 7

### 100學年度第2學期各項招生考試時程 Schedule of admission exams in 2012 Fall Semester

招生管道 Admission	報名日期 Deadlines of Application	考試日期 Dates of Exams
<b>大學部招生項目 (Undergraduate Programs)</b>		
寒假轉學考試 Transfer Exam for Entering in the Spring Semester	12月底 end Dec	1月底-筆試 End Jan. -written test
原住民專班單獨招生* Admission to Aboriginal Student-specific Programs	1月中旬 mid. Jan.	2月底 end Feb.
體育單獨招生 Admission via Distinguished Athletes Program	2月中旬 mid. Feb.	4月初-術科考試 Early Apr. - technical test
甄選入學個人申請 Admission by Application	3月下旬 late Mar.	4月上旬-面試 Early Apr. - interview
暑假轉學考試 Transfer Exam for Entering in the Fall Semester	6月中旬 mid. Jun.	7月底-筆試 End Jul. -written test

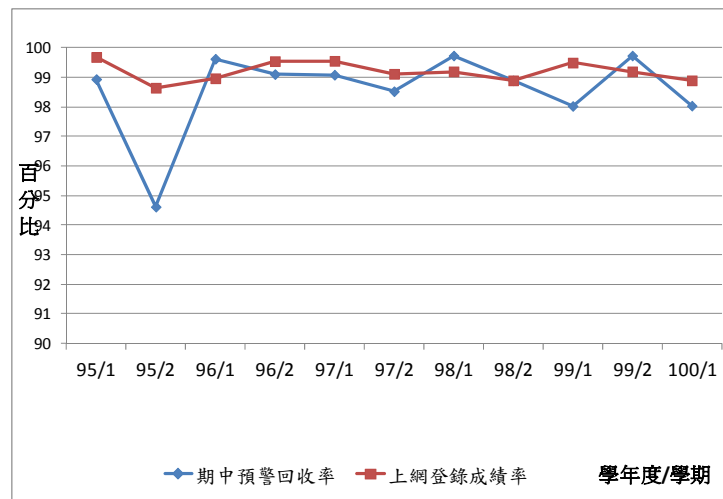
page 8

## 100學年度第2學期各項招生考試時程 Schedule of admission exams in 2012 Fall Semester

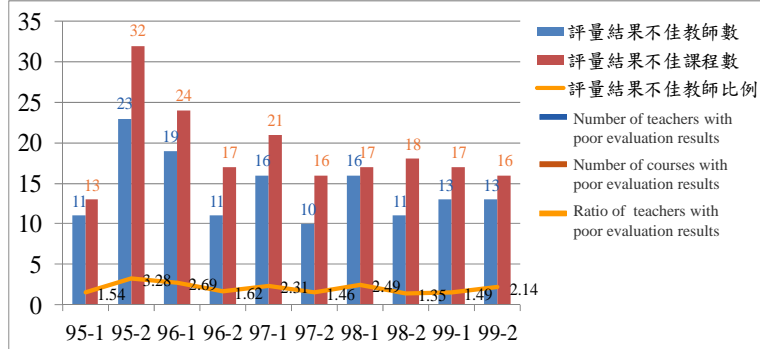
招生管道 Admission	報名日期 Deadlines of Application	考試日期 Dates of Exams
<b>研究所及學士後招生項目 (Postgraduate Programs)</b>		
博碩士推甄 <b>Admission to Postgraduate Programs (Master/Ph.D) by Recommendation and Document Reviewing</b>	10月底 end Oct	11月底-面試 End Nov. – interview
碩士班招生 <b>Admission to Master's Degree Programs</b>	2月上旬 early Feb.	3月初-Early Mar.
博士班招生 <b>Admission to Ph.D Degree Programs</b>	5月上旬 early May	5月下旬-Late May
學士後中醫學系考試 <b>Admission to Postgraduate Chinese Medicine Department via Entrance Exam</b>	6月上旬 early Jun.	6月底-筆試 End Jun. – written test

\*101 學年度開始，傳播與設計學院及觀光餐旅學院辦理「原住民專班」單獨招生。Independent enrolling for aboriginal students will start in 101 academic year in the Communication and Design College and Tourism and Hospitality College.

## 教師登錄期中預警及成績之概況 Rate of on-line submission of grades and pre-warning



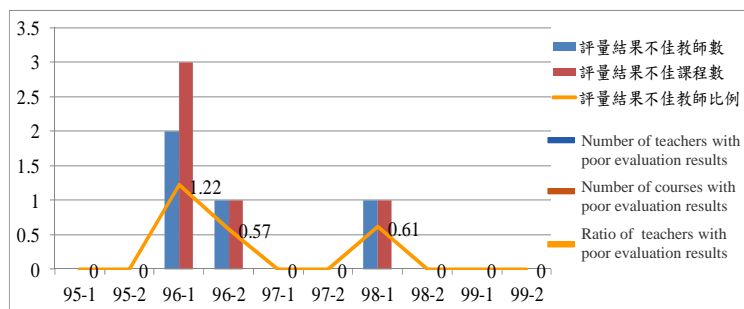
### 全校教學評量結果不佳之概況(學士班) Statistics of teachers with poor teaching evaluation (undergraduate programs)



評量標準：原教學意見調查表採5點量表方式計算，期末調查結果未達標準平均值為3.5分以下；98學年度第1學期起採期末教學意見調查雙向Likert分析，未達滿意標準分數為cutoff全面標準1.5%以下，同時陰面分數達1.25%以上者。

Evaluation Standards: The teaching survey is originally evaluated based on a five-point scale, and the average score that fails the standard of the final teaching survey is below 3.5 points. The Likert scale has been adopted since the final teaching survey in the first semester of the academic year 2009 to conduct the two-way analysis, and the cut-off point is set at 1.5% in overall and 1.25% in negative score.

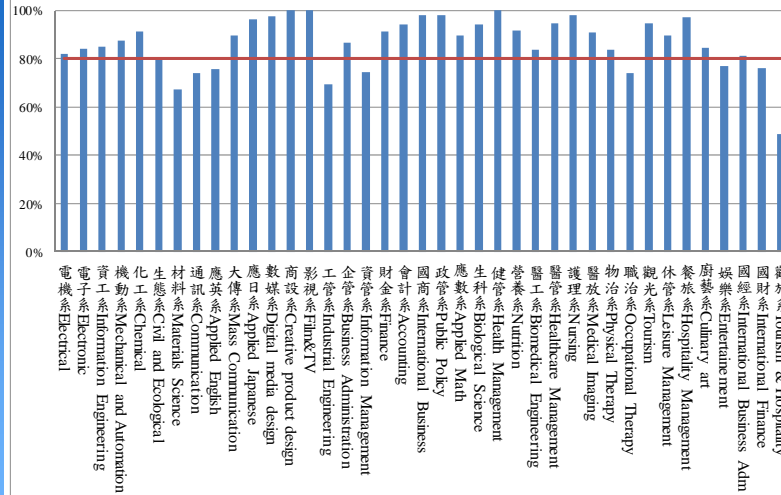
### 全校教學評量結果不佳之概況(碩士班) Statistics of teachers with poor teaching evaluation (Master's programs)



評量標準：原教學意見調查表採5點量表方式計算，期末調查結果未達標準平均值為3.5分以下；98學年度第1學期起採期末教學意見調查雙向Likert分析，未達滿意標準分數為cutoff全面標準1.5%以下，同時陰面分數達1.25%以上者。

Evaluation Standards: The teaching survey is originally evaluated based on a five-point scale, and the average score that fails the standard of the final teaching survey is below 3.5 points. The Likert scale has been adopted since the final teaching survey in the first semester of the academic year 2009 to conduct the two-way analysis, and the cut-off point is set at 1.5% in overall and 1.25% in negative score.

新生問卷調查各學系之填答率統計(學士班) The statistics on the response rate of freshmen surveys for respective undergraduate programs



新生問卷調查各學系之填答率統計(學士班) The statistics on the response rate of freshmen surveys for respective undergraduate programs

系所名稱Department	完成率%	系所名稱Department	完成率%
電機系Electrical	81.90%	政管系Public Policy	98.10%
電子系Electronic	84.10%	應數系Applied Math	89.60%
資工系Information Engineering	85.20%	生科系Biological Science	94.10%
機動系Mechanical and Automation	87.60%	健管系Health Management	100.00%
化工系Chemical	91.30%	營養系Nutrition	91.70%
土木系Civil	80.50%	醫工系Biomedical Engineering	83.90%
材料系Materials Science	67.40%	醫管系Healthcare Management	94.70%
通工系Communication	74.00%	護理系Nursing	98.20%
應英系Applied English	75.80%	醫放系Medical Imaging	90.90%
大傳系Mass Communication	89.70%	物治系Physical Therapy	83.70%

備註：1.學士後中醫學系因與一般學士班招生來源不同，至100-2學期再行施測。  
2.全校填答率統計為86.50%。

P.S.:1.The freshmen survey for students of the School of Chinese Medicine for Post Baccalaureate will be conducted in the second semester of the academic year 2011 as the students are admitted through admission channels different from those for students enrolled in undergraduate programs of the daytime division.

2.The school statistics on the response rate is 86.50% .

新生問卷調查各學系之填答率統計(學士班) The statistics on the response rate of freshmen surveys for respective undergraduate programs			
系所名稱Department	完成率%	系所名稱Department	完成率%
應日系Applied Japanese	96.20%	職治系Occupational Therapy	74.00%
數媒系Digital media design	97.60%	觀光系Tourism	94.60%
商設系Creative product design	100.00%	休管系Leisure Management	89.50%
影視系Film & TV	100.00%	餐旅系Hospitality Management	97.10%
工管系Industrial Engineering	69.60%	廚藝系Culinary art	84.80%
企管系Business Administration	86.50%	娛管系Entertainment	76.90%
資管系Information Management	74.50%	國企系International Business Adm.	81.10%
財金系Finance	91.40%	國金系International Finance	76.30%
會計系Accounting	94.10%	觀餐系Tourism & Hospitality	48.90%
國商系International Business	97.90%		

備註：1.學士後中醫學系因與一般學士班招生來源不同，至100-2學期再行施測。  
2.全校填答率統計為86.50%。  
P.S:1.The freshmen survey for students of the School of Chinese Medicine for Post Baccalaureate will be conducted in the second semester of the academic year 2011 as the students are admitted through admission channels different from those for students enrolled in undergraduate programs of the daytime division.  
2.The school statistics on the response rate is 86.50% .

請協助配合事項(1) Items requiring support 1	
<ul style="list-style-type: none"> <li>▶ 依據課程委員會所規劃各科目應授予之核心能力及基本素養指標權重值，修正授課大綱及授課內容。 Revising course syllabus and content to match the index value for core ability and basic accomplishment set by the curriculum committee</li> <li>▶ 教授相同課程之教師應於授課大綱建檔前先行討論，共同設計課程內容，以達成一致的作法。 Coordinating courses among the teachers teaching the same course</li> <li>▶ 輔導學生提升英語能力、資訊能力及專業證照取得。 Supervising students to acquire English, computer and professional certificates</li> <li>▶ 開授英語教學課程，提升學生外語能力。 Offering courses in English to elevate students' English ability</li> </ul>	



## 請協助配合事項(2) Items requiring support 2

- ▶ 活化跨院系學程，輔導學生修習並取得證書。  
Promoting cross-department/college programs
- ▶ 配合預警機制，進行輔導措施。  
Following pre-warning system, and conducting supervision measures
- ▶ 輔導1/2學分不及格學生，列入教師評鑑加分項目。  
Supervising students who fail 1/2 of credits in previous semester; Points will be added to teachers' annual performance assessment, if students' grades are improved.

## 請協助配合事項(3) Items requiring support 3

- ▶ 強化，實習課程增加學生職場競爭力。  
Strengthening internship programs to increase students' competitiveness in career
- ▶ 提供實習合約書，執行「教育部獎勵大專校院校務發展計畫」。  
Supporting contracts of internship and the University Development Project granted by the MOE
- ▶ 推動服務學習課程，營造校園志工文化。  
Promoting service learning courses, cultivating atmosphere of volunteer work on and off-campus
- ▶ 開設特殊議題教育課程，如性別平等、智慧財產權、環境教育、品德教育、生命教育等，以提升學生多元能力。  
Offering courses on special issues, such as gender equality, Intellectual Property Rights, environmental education, moral education, life education etc. to foster students' multiple intelligence

## 提醒事項(1) Reminder (1)

- 請上網填寫Office Hours，並確實執行。  
Indicating the office hours on-line, and offering office hours precisely
- 請詳實填寫授課計畫表，並依進度授課。  
Filling in the course syllabi specifically and following the schedule
- 按時回覆學生於應用資訊系統所提出的課業問題。  
Replying students' questions in the information system in time
- 於教師差假補課系統辦理請假申請，並於申請日期之後確實完成補課。  
Applying for leave in the on-line system, and making up classes precisely
- 借用教室申請表請於使用日三天前送課務組續辦。  
Applying for using classrooms to the curriculum section three days in advance

page 19

## 提醒事項(2) Reminder (2)

- 自開課日起應依排定時間及教室準時上課，不任意調課或停課，依規定上課須達18週。  
Offering the courses according to the arranged time and classroom; Changes or absence should be properly made up; Courses should be offered for 18 weeks according to the regulation.
- 實施點名作業，確實了解學生出席狀況。  
Making class roll call to make sure the students' presence
- 嚴格防止學生考試作弊。  
Strictly preventing students' from cheating in exams
- 請指導教授嚴禁研究生論文抄襲。  
Strictly forbidding plagiarism in thesis

page 20

## 提醒事項(3) Reminders (3)

- ▶ 提醒學生使用原版教科書，尊重智慧財產權。  
Reminding students to use original copy of textbooks and raise the awareness of Intellectual Property Rights
- ▶ 發表之著作如引用已發表論文之理論模型等作為論文之依據，須於論文中適當註記引用原著，且列入參考文獻。  
Documenting and citing the source of information or theories used as support in text for publication and including the reference in the reference list
- ▶ 專題研究計畫申請書內容若有大量文字與所指導學生之碩士論文相同，應引註該學生之碩士論文。  
If a project proposal contains massive content identical to the thesis of the supervised student, the student's thesis should be properly cited in the text.

## 配合執行學校相關政策之獎勵措施 Measures of awards

- 凡符合以下條件之一者，可提出申請配發或汰換電腦：  
Teachers who meet one of the following requirements are eligible to apply for a new or replacing laptop computer:
- ▶ 家族導師輔導之導生，其英檢通過人數達該家族導生人數之50%或12人以上。英檢通過門檻依該學系「英語能力畢業資格檢定暨作業規定」辦理。  
50% of the supervised students or more than 12 students pass the English certificate exams according to the departmental regulation of English graduation threshold.

## 配合執行學校相關政策之獎勵措施 Measures of awards

- 符合下列「數位學習課程」認證或「數位學習教材」認證之一。

Teachers whose E-learning courses or E-learning materials have been certified by the MOE.

- 曾獲得「傑出教學獎」。

Teachers who have won the Award of Outstanding Teacher.

- 曾獲得「優良導師獎」。

Teachers who have won the Award of Outstanding Supervisor.



## 教育部計畫徵件 Call for Project Proposal

- 教育部擬辦理「補助大學跨科際問題解決導向課程計畫徵件」。

Call for MOE project proposal: Subsidy projects of interdisciplinary problem-solving based curriculum for undergraduate programs

- 申請項目：科學人文跨科際問題解決導向或研究學習導向專業課程補助計畫(B類)。

Application category B: Subsidy projects of science and humanity interdisciplinary problem-solving based or research learning oriented professional curriculum



## 教育部計畫徵件 Call for Project Proposal

- B類計畫針對大學校院一學年個別專業課程改進計畫進行補助，由開設課程之教師提出申請。

The subsidy is subject to one-year professional curriculum improvement projects for undergraduate programs. The proposal should be submitted by the instructor.

- 受理日期：101年5月31日(四)前。

Deadline: 2012.5.31 (Thursday)

- 詳情請至教務長室網頁最新消息查詢。

For further information please refer to the current news of Dean's Office of Academic Affairs

感謝您~

對教務工作的付出與協助

教務處全體同仁

Thank you very much for your  
commitment and support!

Office of Academic Affairs