

Instructions on ISU Wi-Fi Connections for Windows XP Operating System

Users are allowed to connect to ISU Wi-Fi after passing the authentication request.

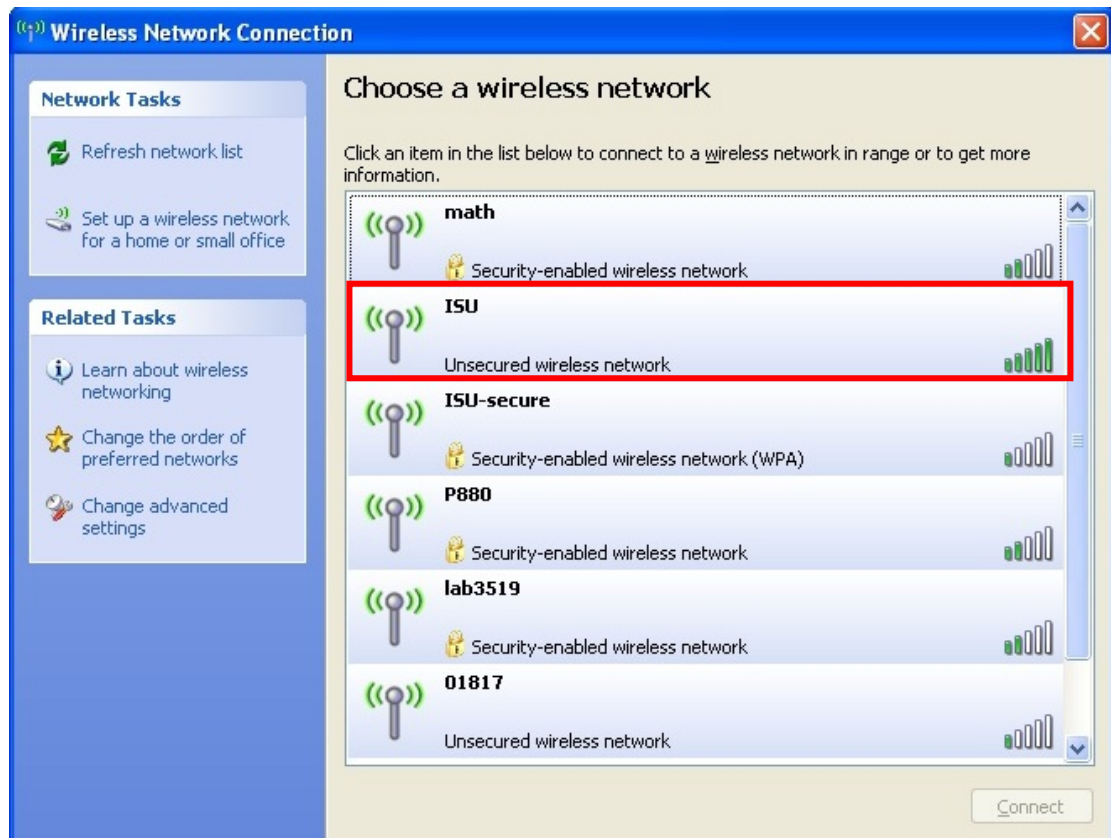
The authentication is only applicable to the coverage of ISU wireless network as announced by the Office of Library and Information Services.

Please follow the instructions on Wi-Fi connections setting as below:

(The instructions are applicable to the setting of the built-in Wireless Network Connection for Windows XP operating system. Please refer to the user's manual if other network interface cards are used.)

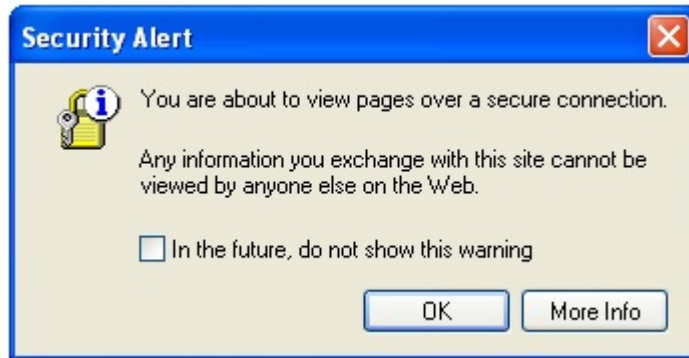
Step 1:

Open the "Wireless Network Connection", select "ISU" and click "Connect".



Step 2:

Please open the IE Browser after the wireless network is connected. The browser will directly lead to the portal of ISU Wireless Network Authentication System. If the “Security Alert” window will appear, please click “Ok”.



Step 3:

Please enter the username and password for ISU e-mail and then click “Submit” button.



Step 4:

Use the Wi-Fi connections after authentication.