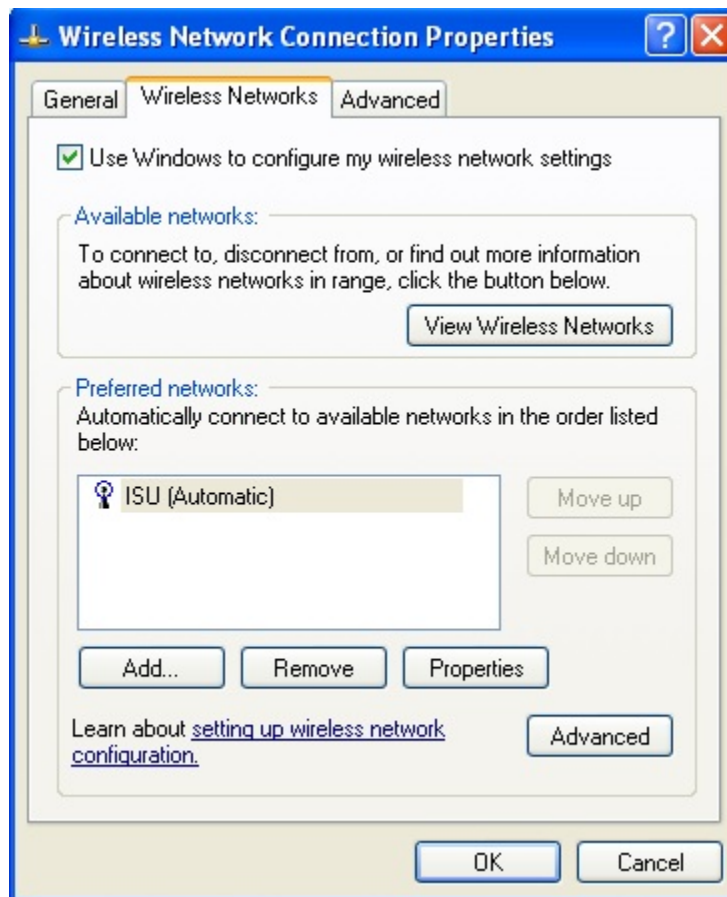


# The settings of connecting to ISU-secure for Windows XP operating system:

1. Enter "Control Panel" and find "Network Connections".  
Click "Wireless Network Connection" and right click to view "Properties".



2. Select "Wireless Networks" at the top, and tick "Use Windows to configure my wireless network settings".  
Click "Add" in the "Preferred networks".



3. Please enter “ISU-secure” for the Network name (SSID). Select “WPA2” for the “Network Authentication” and “AES” for the “Data encryption”.

The image shows a screenshot of the 'Wireless network properties' dialog box in Windows. The 'Authentication' tab is selected. The 'Network name (SSID)' field contains 'ISU-secure'. The 'Wireless network key' section is expanded, showing 'This network requires a key for the following:'. Under this, 'Network Authentication' is set to 'WPA2' and 'Data encryption' is set to 'AES'. There are empty text boxes for 'Network key' and 'Confirm network key'. The 'Key index (advanced)' is set to '1'. The checkbox 'The key is provided for me automatically' is checked. The checkbox 'This is a computer-to-computer (ad hoc) network; wireless access points are not used' is unchecked. At the bottom, there are 'OK' and 'Cancel' buttons.

Wireless network properties

Association Authentication Connection

Network name (SSID): ISU-secure

Wireless network key

This network requires a key for the following:

Network Authentication: WPA2

Data encryption: AES

Network key:

Confirm network key:

Key index (advanced): 1

The key is provided for me automatically

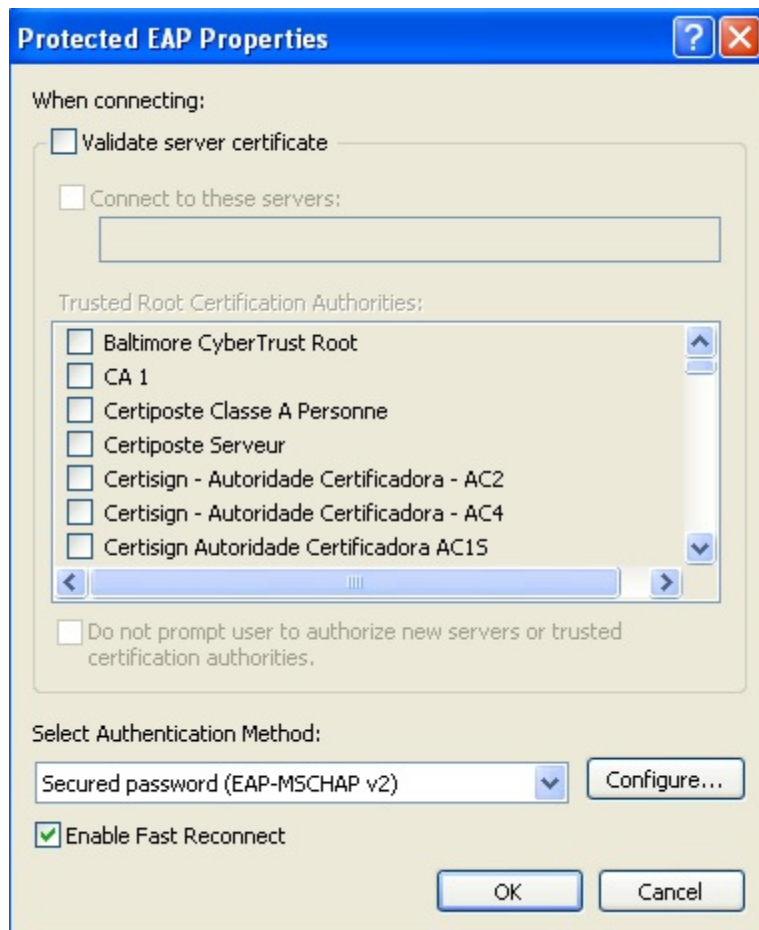
This is a computer-to-computer (ad hoc) network; wireless access points are not used

OK Cancel

4. Select “Authentication” at the top. Select “Protected EAP (PEAP)” for the EAP type, and tick “Authenticate as computer when computer information is available”.



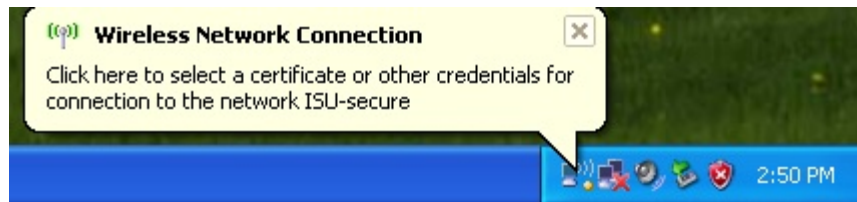
5. Click “Properties” to uncheck “Validate server certificate”, and select “Secured password (EAP-MSCHAP v2)” for “Select Authentication Method”.



6. Click “Configure” button, and the dialog window of EAP MSCHAPv2 Properties will be pop up. Please uncheck “Automatically use my Windows logon name and password (and domain if any)” and then click “OK”.



7. Successfully connect to ISU-secure.



8. Enter your ISU e-mail username and password to access the network for authentication.



9. Use the Wi-Fi connections after authentication.